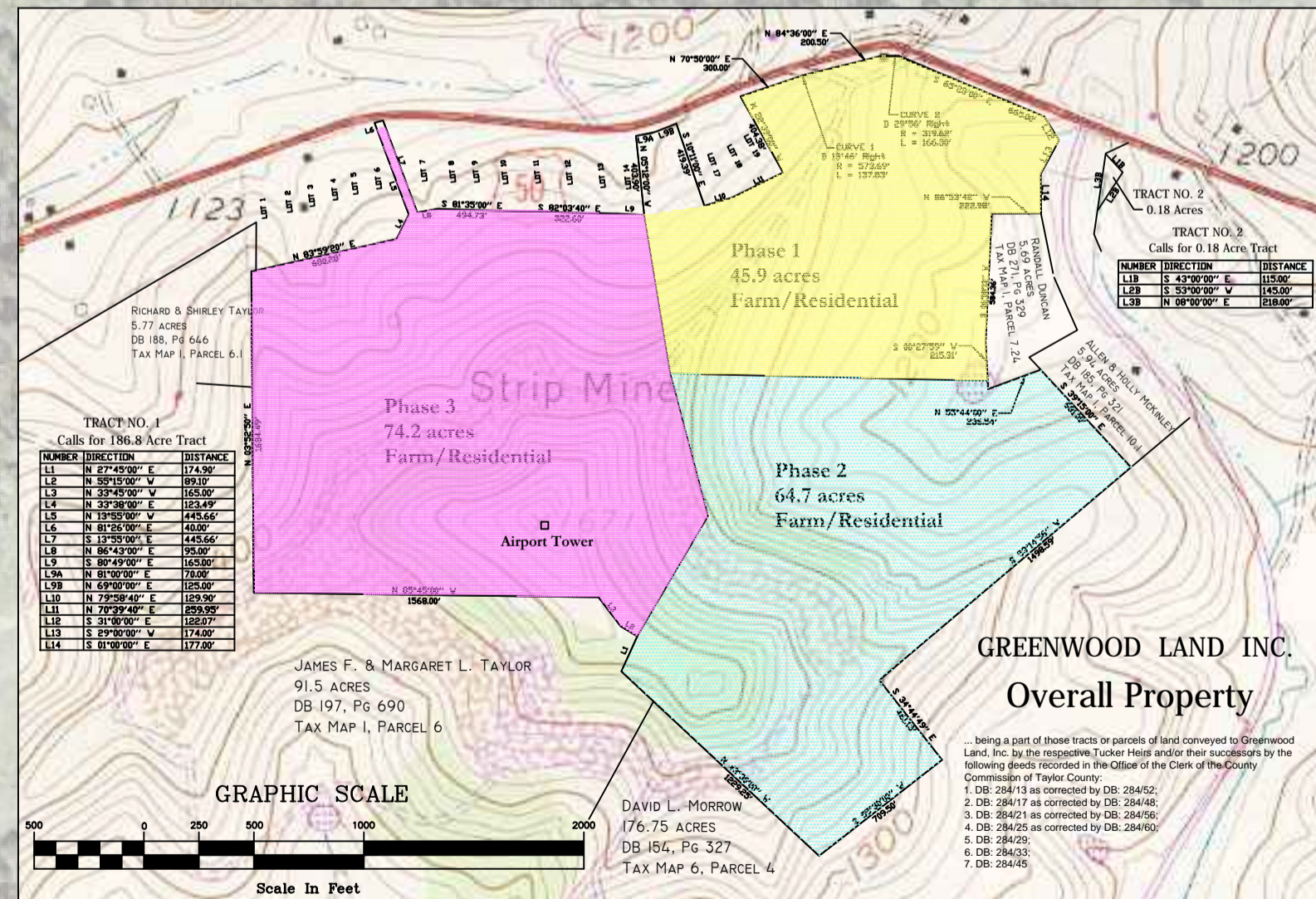


LOT BEARINGS		
LINE	LENGTH	BEARING
L1	59.93	N86°06'06"E
L2	116.84	N81°19'24"E
L3	47.19	S86°06'06"W
L4	50.44	N86°35'51"W
L5	52.45	S76°08'12"W
L6	103.17	S89°46'07"E
L7	90.78	S84°10'02"E
L8	75.21	S68°08'38"E
L9	166.36	S60°20'17"E
L10	117.33	S85°13'45"W
L11	85.45	S77°53'36"W
L12	74.51	S59°12'08"W
L13	49.62	S53°25'26"W
L14	76.43	N19°22'01"W
L15	63.63	N31°01'13"W
L16	55.38	N54°21'38"W
L17	56.62	N00°00'00"E
L18	75.10	N53°43'38"E
L19	65.65	N59°17'49"E
L20	75.99	N77°53'51"E
L21	102.79	N85°04'41"E
L22	71.73	S59°36'16"E
L23	20.99	S58°43'40"W



- GENERAL NOTES**
1. All main roadways have a 40-foot Right-of-way with a final pavement width of 20 feet.
  2. All lots have 10-foot Right-of-ways on the inside of all boundary lines for utilities.
  3. The roadway across Lots 1, 2 and 3 has a 20-foot Right-of-way and a final pavement width of 14 feet.
  4. Certified per WV Code 36B2109

**GREENWOOD LAND, INC.**  
1010 Hall Valley Drive, Bridgeport, WV 26330

**Highland Ridge Subdivision**  
Route 2, Box 106-D  
PHILIPPI, WV 26416  
PHONE: 304-457-3441

Located South of US 50 in Western Taylor County

REVISION DATES	FIELD SURVEY BY	DRAWN BY	SCALE OF MAP
11/03/2005	MG & DT	AC	SEE BARSCALE
	PLOTTED BY	CHECKED BY	PROJECT NUMBER
	HP	MG	2005-TY19
	DATE OF MAP	FINAL APPROVAL BY	SHEET   OF
	OCT. 2005	MG	



*Michael Green*  
Professional Engineer No. 7621  
Professional Surveyor No. 1541  
Date: NOVEMBER 15, 2005

