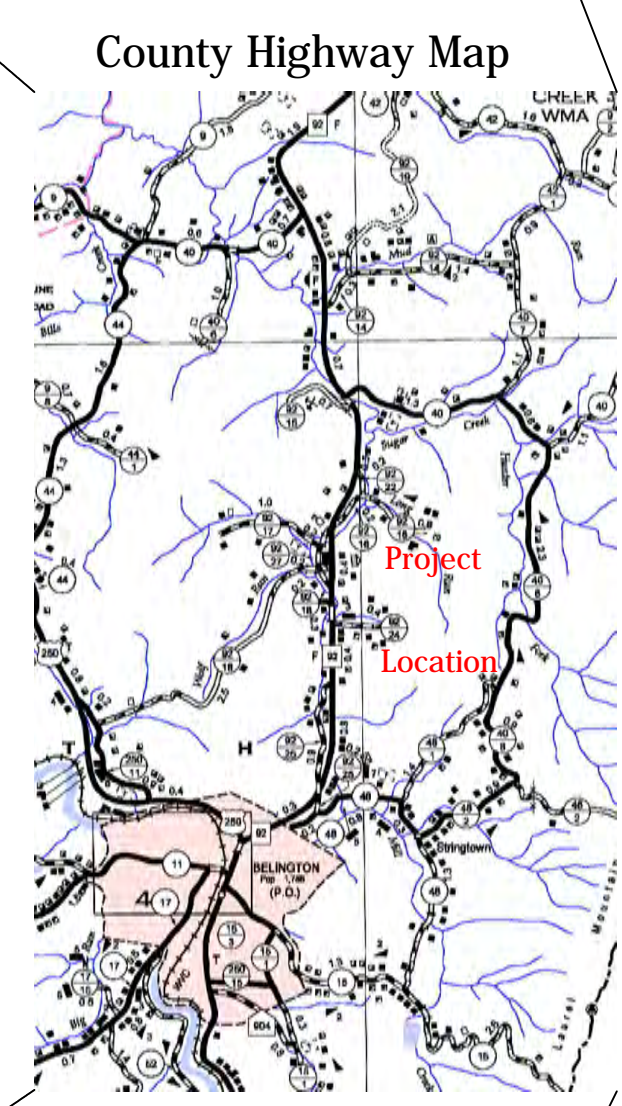
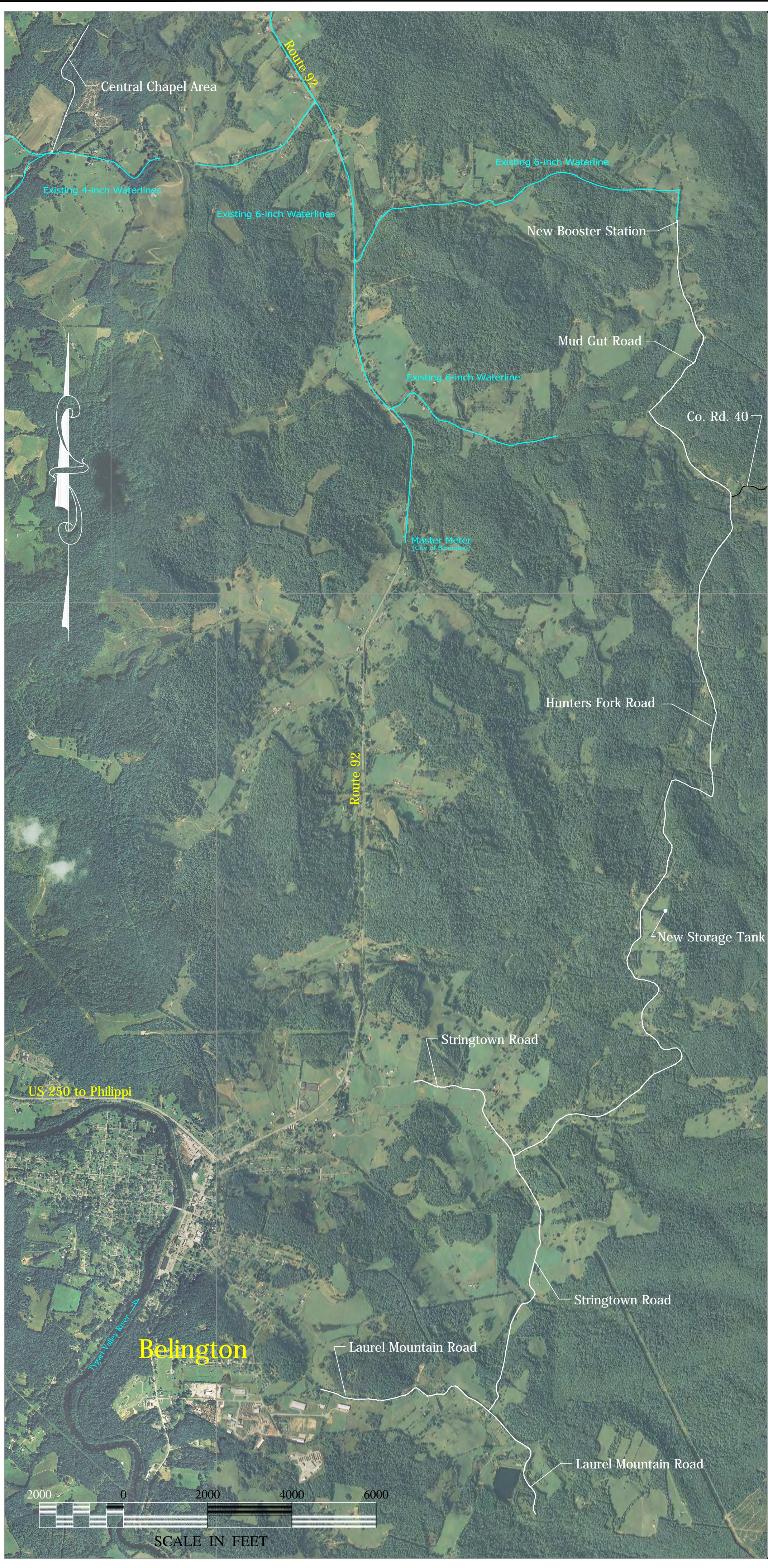


# Central Barbour Public Service District HUNTERS FORK WATERLINE EXTENSION

JEFF CARPENTER      CHAIRMAN  
ROBERTA KEENER    BOARD MEMBER  
GARY BURNER        BOARD MEMBER  
VALLI DAVIS         OFFICE MANAGER



## SHEET INDEX

Sheet 1	COVER SHEET
Sheet 2	SERVICE AREA and LIST OF CUSTOMERS
Sheet 3	MUDGUT ROAD - Northern Section
Sheet 4	MUDGUT ROAD and HUNTERS FORK ROAD INTERSECTION
Sheet 4B	COUNTY ROAD 40 and PRESSURE REDUCING STATION
Sheet 5	HUNTERS FORK ROAD - Northern Section
Sheet 6	HUNTERS FORK ROAD - Storage Tank Area
Sheet 7	HUNTERS FORK ROAD - Southern Section
Sheet 8	HUNTERS FORK ROAD and STRINGTOWN ROAD INTERSECTION
Sheet 9	STRINGTOWN ROAD
Sheet 10	STRINGTOWN ROAD and LAUREL MOUNTAIN ROAD INTERSECTION
Sheet 11	LAUREL MOUNTAIN ROAD - Western End
Sheet 12	JOSEPH CHAPEL AREA
Sheet 13	TRENCH AND CASING DETAILS
Sheet 14	MISCELLANEOUS DETAILS
Sheet 15	BOOSTER STATION DETAILS
Sheet 16	STORAGE TANK
Sheet 17	STORAGE TANK DETAILS

### GENERAL NOTES ON AS-BUILT DRAWINGS

- As-built waterline location shown in dark red.
- Waterline is typically 3 to 5 feet from edge of pavement as required by Division of Highways
- Waterline is a minimum of 36 inches deep to the top of pipe.
- Customer meter locations are approximate.
- 86 of the 93 new customers have pressure reducing valves.
- Valves are referenced to permanent structures and valve markers.
- Service line to opposite side of road customers is enclosed in 1-1/2" PVC Casing.
- Customer names were updated to May 13, 2011.
- All bends and tees are ductile iron pipe.



AS-BUILT DRAWINGS Certified by  
MICHAEL GREEN, WV P.E. NO. 7621

*Michael Green* Date: May 19, 2011

Central Barbour Public Service District Hunter's Fork Waterline Extension Project			
 Route 2, Box 106-D Philippi, West Virginia 26416 Telephone No. 304-457-3441		<h2>COVER SHEET</h2>	
REVISION DATES		FIELD SURVEY BY MG and NC	SCALE OF MAP See Barscale
		DRAWN BY AC	
		PLOTTED BY HP	CHECKED BY MG
		DATE OF MAP May 19, 2011	PROJECT NUMBER 2009-BR02
		FINAL APPROVAL BY CBPSD	SHEET 1 OF 17