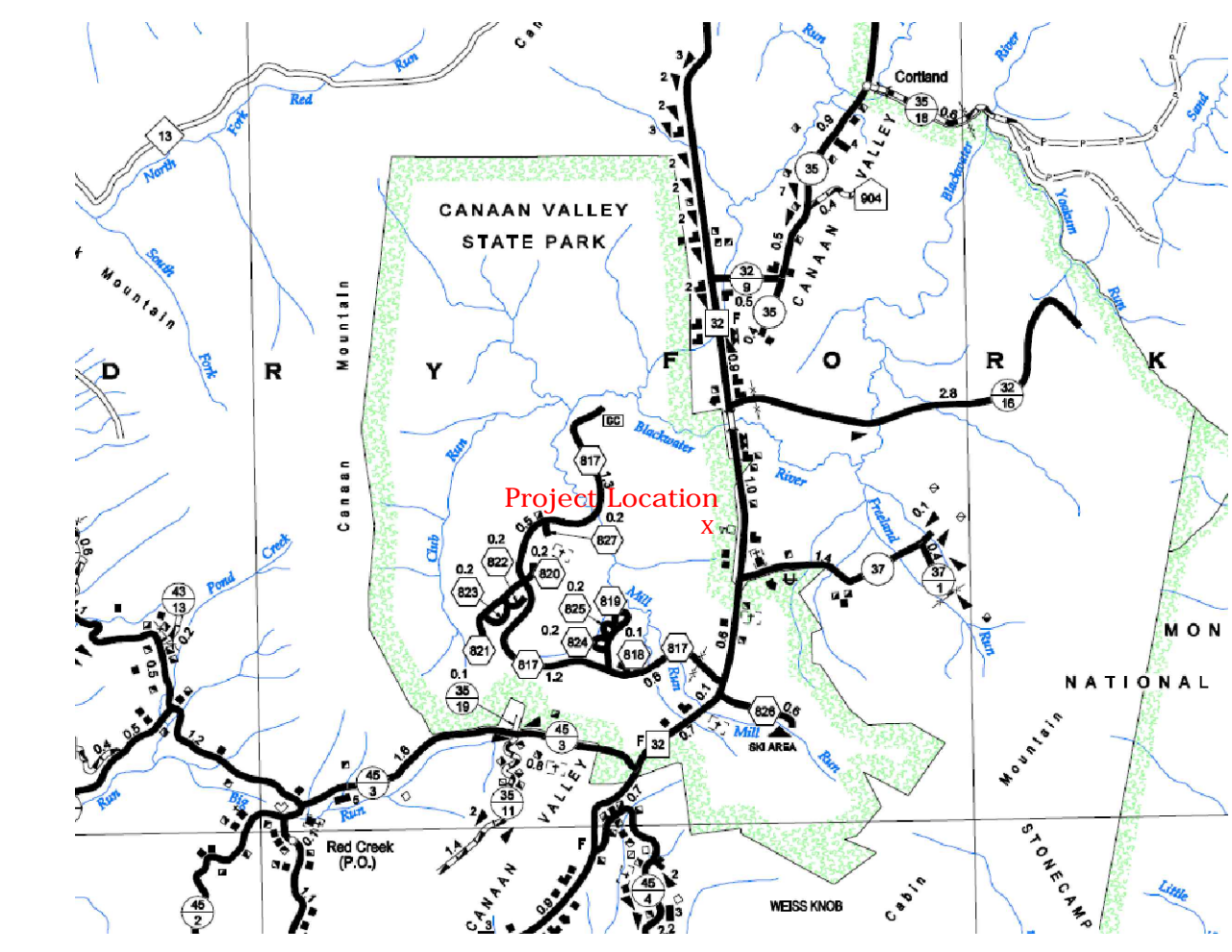


LOCATION MAP



TUCKER COUNTY HIGHWAY MAP

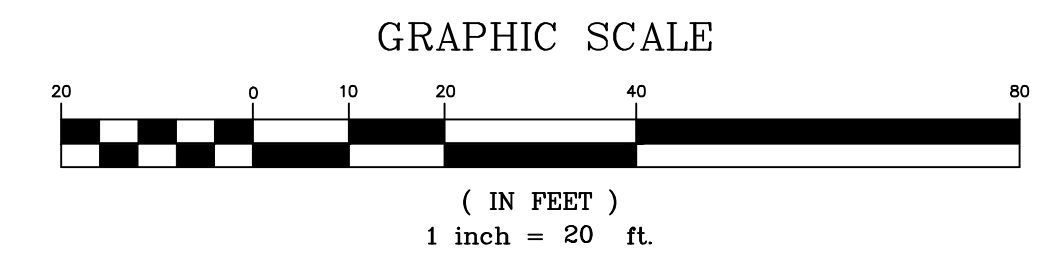
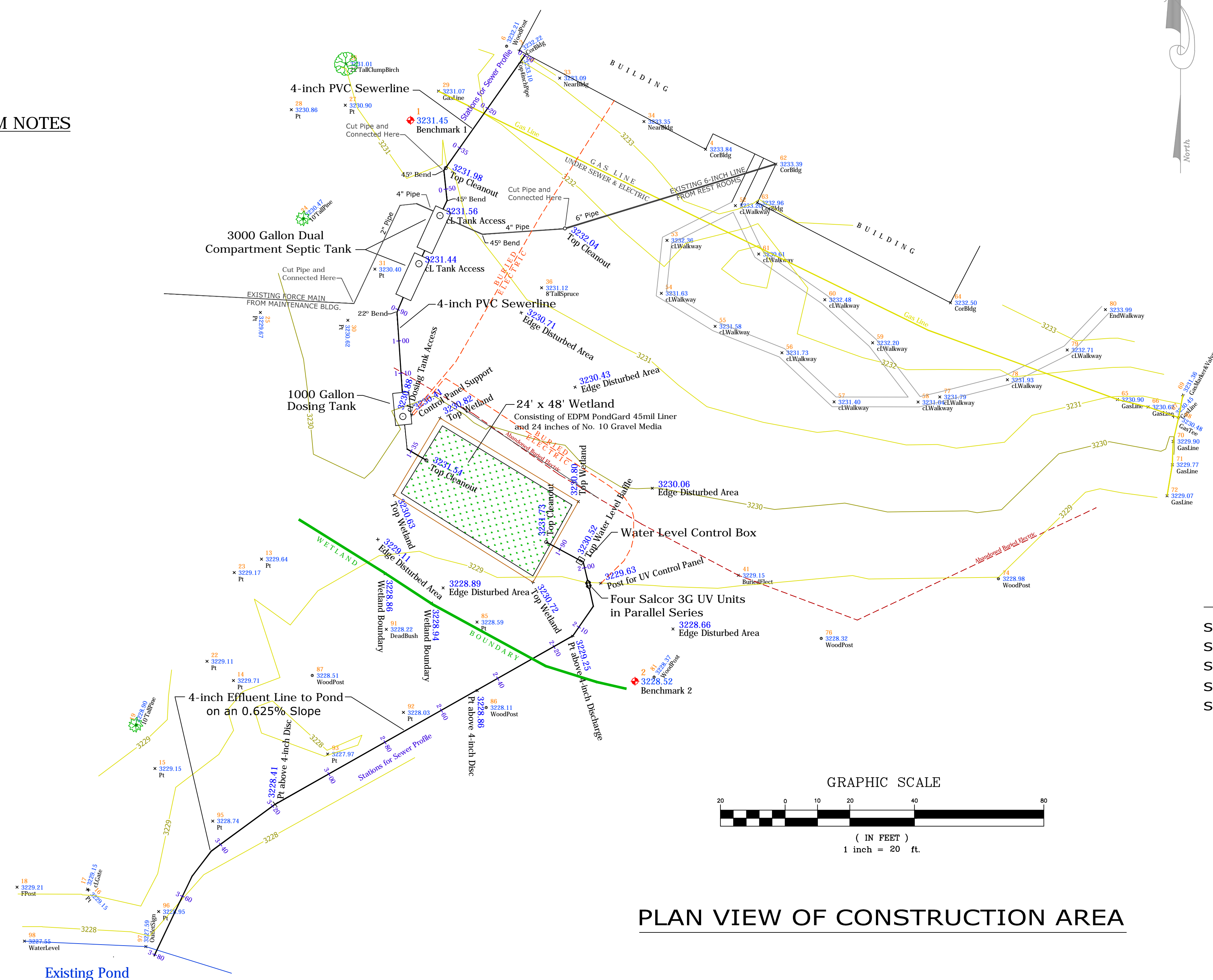
**CONSTRUCTED SEWAGE SYSTEM NOTES**

1. Design Flow based upon the following:
  - a. 20 Workers @ 20 gallons per day
  - b. 100 Visitors @ 5 gallons per day
  - c. Total Daily Flow is 900 gallons per day
2. 4" PVC Lines Connect All Units

**Benchmark Information**

BM-1 N 198.594.2976  
 E 1.983.504.8696  
 Elev. 3.231.4503

BM-2 N 198.420.7613  
 E 1.983.574.3057  
 Elev. 3.228.5204



PLAN VIEW OF CONSTRUCTION AREA

**LEGEND**

- 5-foot Contour Interval
- 1-foot Contour Interval
- Elevation
- Wetland Treatment Area
- Pine Tree
- Leaf Tree
- Benchmark
- Survey Shot

**SHEET INDEX**

- Sheet 1 SEWAGE SYSTEM PLAN VIEW
- Sheet 2 SEWER PROFILES AND WETLAND CROSS-SECTION
- Sheet 3 SEWAGE SYSTEM COMPONENT DETAILS
- Sheet 4 CONSTRUCTION PICTURES - Tanks and Connections
- Sheet 5 CONSTRUCTION PICTURES - Wetland, Control Box and UV Disinfection



As-Built Plans certified by: *Michael Green*  
 Michael Green, WV P. E. No. 7621  
 Date: October 3, 2016

Canaan Valley FWS Septic System 6263 Appalachian Highway Davis, WV 26260			
<i>Green Engineering Inc.</i> 9154 Morgantown Pike Philippi, West Virginia 26416 Telephone: 304-457-3441		<b>Sewage System Plan View</b>	
REVISION DATES			
August 20, 2015			
Sept. 10, 2015	FIELD SURVEY BY MG and GS	DRAWN BY AC	SCALE OF MAP 1" = 20 feet
March 17, 2016	PLOTTED BY HP	CHECKED BY MG	PROJECT NUMBER 2015-TC02
June 29, 2016	DATE OF MAP August 6, 2015	FINAL APPROVAL BY US Fish & Wildlife	SHEET 1 OF 5