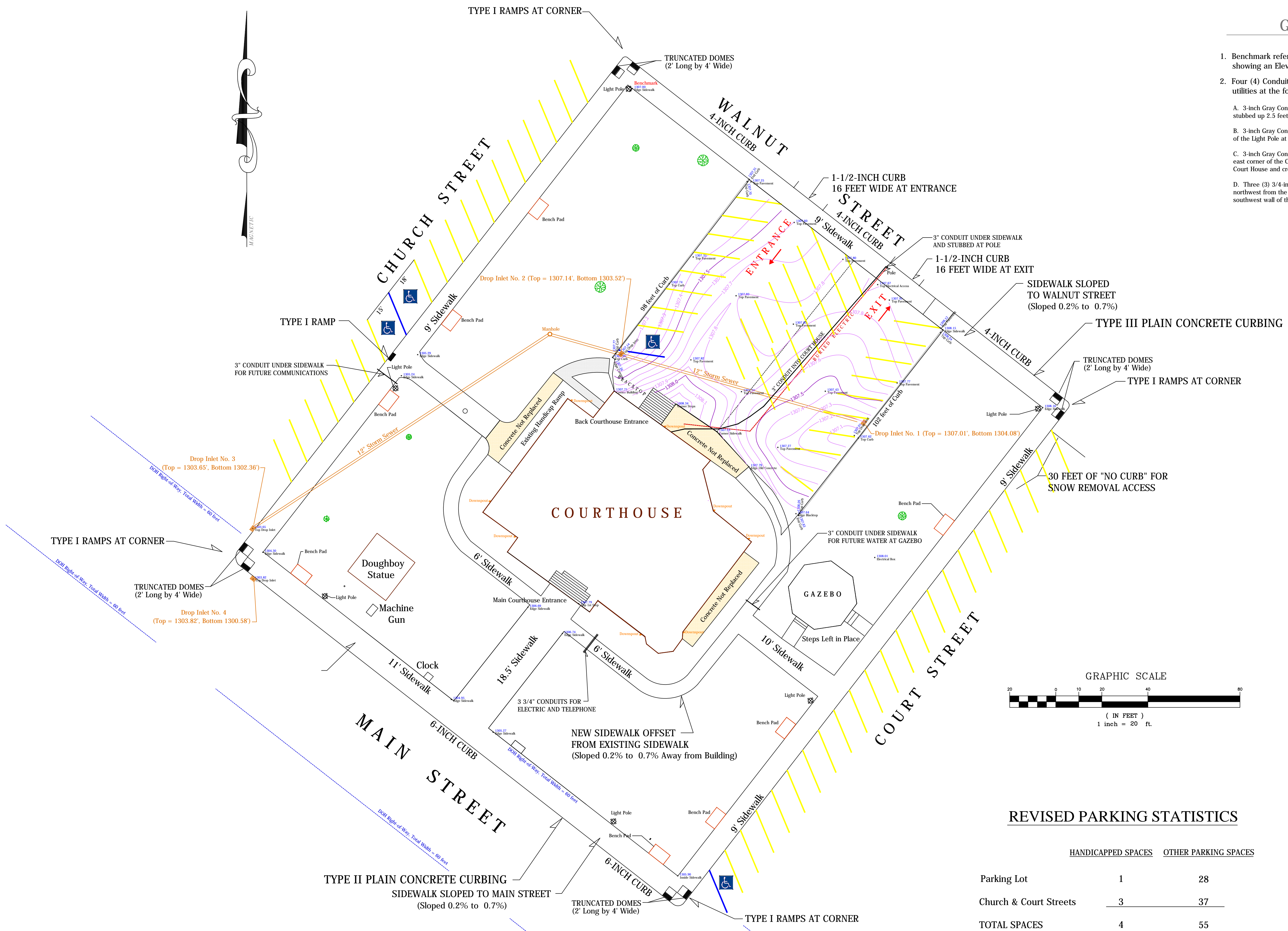


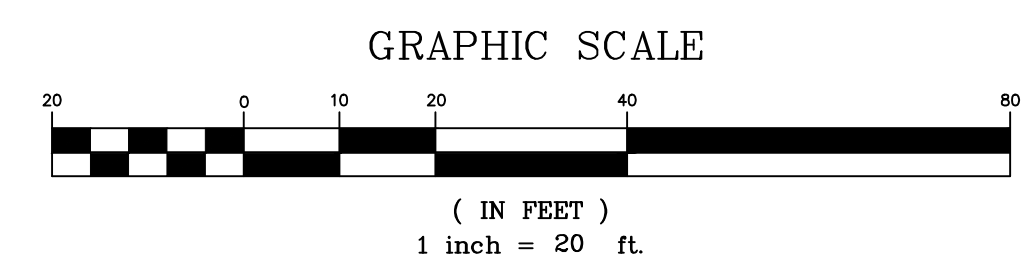
### GENERAL NOTES

1. Benchmark referenced to Google Earth data of November 13, 2003, showing an Elevation of 1307.0 feet at the northwest corner of sidewalk.
2. Four (4) Conduits were placed to allow for future communications and utilities at the following locations.
  - A. 3-inch Gray Conduit for future Fiber Optic cable north of Electric and Telephone Pole, stubbed up 2.5 feet above the sidewalk by Parking Area Exit.
  - B. 3-inch Gray Conduit for future communications toward Church Street, 2.5 feet northeast of the Light Pole at the inner edge of the Church Street sidewalk.
  - C. 3-inch Gray Conduit for future Potable Water at the Gazebo, 21 feet southwest from the east corner of the Court House, 12.75 feet perpendicular from the southeast wall of the Court House and crossing under the inner sidewalk.
  - D. Three (3) 3/4-inch Gray Conduits for 12-2 Electrical Wire and Telephone Wire, 26 feet northwest from the south corner of the Court House and 14.2 feet perpendicular from the southwest wall of the Court House.



### LEGEND

- 1307.00 Benchmark at Church & Walnut
- 1308.12 Inside Concrete Survey Shot
- 1308.12 Edge Concrete Survey Shot
- 0.1-foot Parking Lot Contours
- Conduit Installed for Future Use



### REVISED PARKING STATISTICS

	HANDICAPPED SPACES	OTHER PARKING SPACES
Parking Lot	1	28
Church & Court Streets	3	37
<b>TOTAL SPACES</b>	<b>4</b>	<b>55</b>

**BARBOUR COUNTY COMMISSION**  
Phillippi, West Virginia

*Green Engineering Inc.*

9154 Morgantown Pike  
Phillippi, West Virginia 26416  
Telephone No. 304-457-3441

**FINAL LAYOUT OF SIDEWALKS AND PARKING AREA**

REVISION DATES	FIELD SURVEY BY MG and GS	DRAWN BY AC	SCALE OF MAP As Noted
	PLOTTED BY HP	CHECKED BY MG	PROJECT NUMBER 2012-BR08
	DATE OF MAP Aug. 4, 2014	FINAL APPROVAL BY BCC	SHEET 2 OF 3